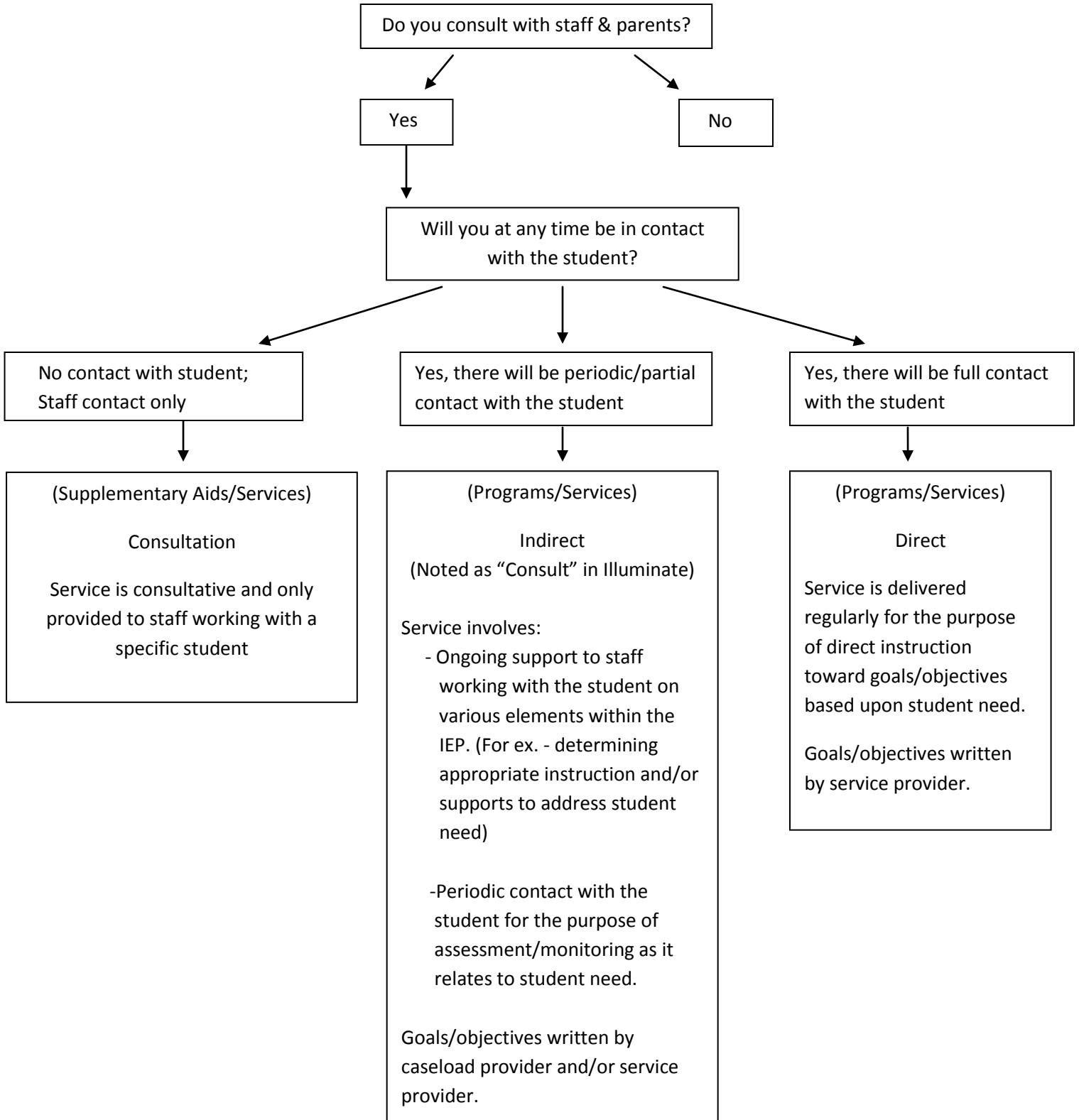


CONSULTATIVE VS. DIRECT SERVICE



Remember....Documentation of all services listed above must be maintained: Date, Time, and Information relative to service provided (Ex. - what types of instruction or supports were discussed with the caseload provider, what form of monitoring or assessment was done with the student, student progress toward goals/objectives, etc...).

This documentation is necessary for substantiating ongoing service, a change in the type of service provided, or termination of service when educational programming is reviewed.

Consultation versus Direct Service

In order for a service to be listed on the IEP, the student must qualify for the service based upon student need, or the teacher must be in need of the support from the service provider in order to address the student's needs.

Supplementary Aids/Services/Support

Consult – The provider will only work with the staff and parents regarding a specific student.

The provider will not have direct contact with the student

- The provider will not directly or indirectly support the student toward a goal/objective

** Consult services under this section are not tied to a goal on an IEP.

Special Education Program/Services

Indirect – Noted as “Consult” within Illuminate:

The service provider must be:

- Working with staff to assist the student toward the attainment of specific goals. (For ex.- assisting the caseload provider with determining appropriate instruction/supports to address student need)
- Making periodic contact with the student to follow up or monitor student progress toward goals, not necessarily providing instruction on that goal.

Typically the caseload provider is the primary individual responsible for goal instruction.

Goals/Objectives are written by the caseload provider and/or service provider

The goal for which support is given, does not necessarily have to be in the area the consult provider typically works.

For example: PT is supporting the speech goal – The PT provider is supporting that goal by monitoring the student's mobility and gross motor skills to access that service

Direct-

Direct instruction is being provided to the student toward attainment of goals/objectives based upon student need.

Documentation:

Documentation of all services (direct, consult, or both) whether noted in Supplementary Aids & Services or in Programs & Services, must be maintained: date, time, instruction and/or consultation services provided, and student progress toward goals/objectives

Illuminate:

A need must be listed within the “Demonstrated Needs” section for the provision of service.

- If service is noted within the Supplementary Aides & Services section, be sure that option is marked as to where in the IEP it will be addressed
- If service is noted in the Program/Services section, be sure the goals/objectives option is marked as to where in the IEP this need will be addressed